

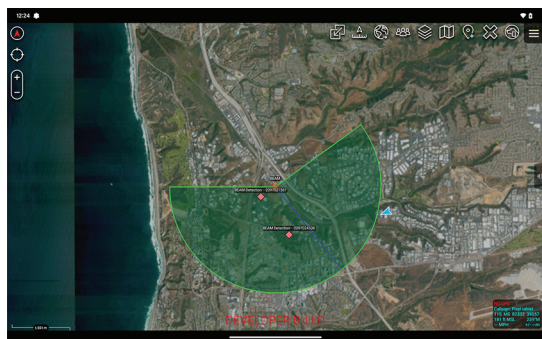
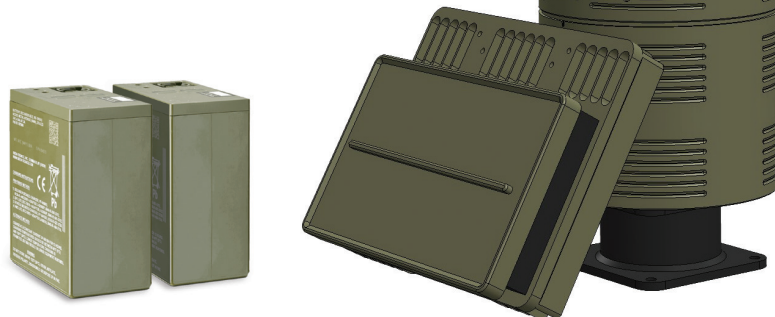
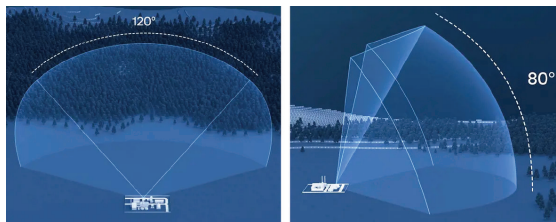
# Beam™ 50

## Optical and Radar Detection System

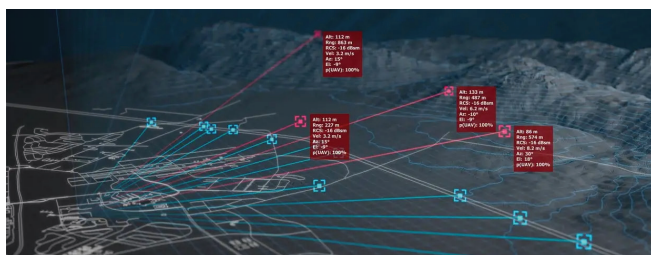
- Automatic 360° scanning
- Accurate and reliable UAS detection
- Up to 20 simultaneous targets
- All-weather 24-hour surveillance

### System Features

- Geo-location of targets with GPS
- HTML5 interface for local and remote control
- Optional Campanile EO/IR slave
- Dual battery hot-swap supported
- Full ATAK/CIVTAK 5.0 and up support



ATAK control and interface

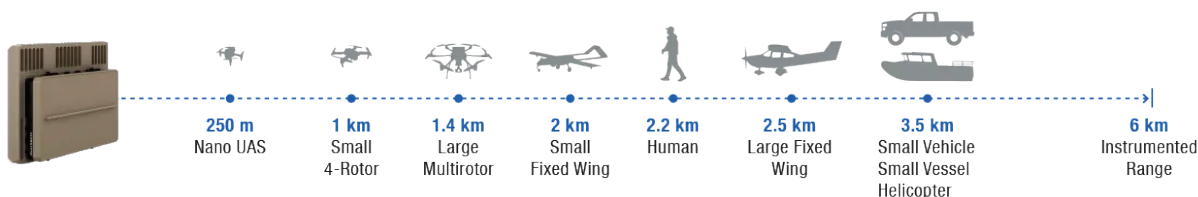


MET-D Program

### Specifications

Detection Range*	up to 1 km
Measurement Accuracy	2 m
Optical Field-of-View	Continuous scanning 360° in azimuth and -30°/+90° in elevation
Radar Field-of-View	120° in azimuth and 80° in elevation
Sensor Size	10 x 6 x 20 in
Sensor Weight	20 lbs
Backpack Weight	35 lbs
Optional Sensors	EO, IR Campanile™ system
Mounting	Tripod included
Power Supply	Up to 2 batteries with hot swap; 2590/U battery (2) for 4 hours of operation
Operating Temperature	-5° to +50° C
Storage Temperature	-10° to +55° C
Panoramic Camera	Full video
Target Information	GPS coordinates of all targets are shown on map and stored
Interface	Ethernet for LAN connectivity with full ATAK support

*\*Minimum and maximum ranges vary based on operating environment. Ray performance depends on environmental conditions, such as atmosphere transparency (fog, dust level, smoke content), atmospheric precipitation (rain, snow), ascendant heat flows, luminosity of light background, light conditions, as well as characteristics of the target optical device.*



Radar Tracking Range

