



## Internal Display™ Technology

### Internal Display™ (ID)

ID™ technology breaks new ground in handheld optical devices. Similar to “heads-up displays” used by military pilots, ID™ incorporates a transparent display into riflescopes, spotting scopes, and binoculars. ID™ provides a platform for accessories to display thermal and night vision video streams, ballistic information, and many other streams of data.



### G1™ Rifle Scope

The G1™ is a superb 1-8x24 rifle scope with anti-reflective coatings and an illuminated reticle in the second focal plane. It's the first rifle scope to utilize the unique ID™ technology; the ID™ does not interfere with any standard function of the rifle scope. The G1™ can be augmented with sensor technologies that display information on the internal “heads-up” display and vastly expand the user's capabilities without ever taking one's eyes off the target.



### G1T3™ System

This system is based on the combination of the G1™ rifle scope platform to display our next generation of thermal imager's images, the T3.™ The T3™ is simply the thermal imaging side of the T2™ without the range-finder. It has real-optical zoom from 2-4x and runs on a CR123 battery for up to 10 hours.



### G1F1™ System

The G1F1™ also uses the ID™ G1™ rifle scope but specifically to display the F1™ laser range finding data. This system is meant to be affordable and rugged and can handle ranging distances up to 1200 meters with pin-point accuracy.



### G5™ Rifle Scope

The G5™ is the second product with the unique Internal Display technology integrated. The ID™ does not interfere with any standard function of this 5 x 30 rifle scope. With sensor technologies G5™ can vastly expand the utilization of the rifle scope by offering Situational Awareness while user is focused on the target.



## Scopes

---

### S1LRF™ Spotter Scope

The S1LRF™ is not built-in with S1™ Spotting scope, making perfect system for long-range shooting sports and similar spotting applications.

### S2LRF™ Spotter Scope

The S2LRF™ portable spotting scopes offer proven performance and outstanding HD image quality. It has a Super Flat Field ED 12x50 scope - optimum configuration for target shooter. All S2™ scopes have a build-in reticle with no distortion and perfect image at all magnifications.

### scopeX2™ Adapter

The scopeX2™ will magnify 30 mm or 1" tube scope's current range by exactly 2x. Any 2x scope can be doubled to 4x, 6x to 12x, or even 8x to 16x. When mounted in front of your scope the user can use the scopeX2™'s built-in turrets to boresight without having to change a single setting on the original scope.

### scopeX4™ Adapter

The scopeX4™ will magnify any tactical scope by exactly 4x. With such a large change in magnification, a focus adjustment is included. The scopeX4™ is a two-part system whose mount can be permanently fixed to the scope and the optics can be removed at will. Standard turrets and adjustments can be used to optimize and zero the scope to perfection.



## Thermal Imaging

---

### T8® Thermal Clip-on

The T8® Thermal Clip-on scope features state-of-the-art image enhancement algorithms developed to provide hunters with an unrivaled day/night vision advantage in detecting, observing and engaging targets. It incorporates the latest and greatest 1280 x 1024 VOx thermal sensor and optical technologies to deliver excellent reliability, magnificent imagery and range performance.



### T5™ Thermal Imager

The T5™ offers on-board image processing enhancement modes; manual and automatic NUC capability; battery read-out and protection; and multiple display views: white hot/black hot/NV green/color. Wide angle units augment law enforcement agency capabilities conducting search operations.



### T3w™ Thermal Imager

The wide angle units of the T3w™ augment law enforcement agency capabilities conducting search operations. It also features on-board image processing enhancement modes; manual and automatic NUC capability; and multiple display views: white hot/black hot/NV green/color.



### Afocal Thermal Adapters

2x, 3x, 4x, and 2-4x adapters are specifically designed for hand held IR cameras. Using interchangeable connectors the adapters can connect to L-3 45xx/X200/X100 cameras or any 36xx/26xx cores. Focal length of the system simply increases by a factor of 2 or 4. No electrical or mechanical modifications to the core system. Shock and vibration tested.



## Digital Night Vision

---

### N<sub>2</sub><sup>TM</sup> Digital NV Clip-on

The N<sub>2</sub><sup>TM</sup> is a Digital Night Vision (DI<sup>2</sup>) clip-on system that quickly transforms your day scope into a night vision device without any special tools or affecting the boresight. The DI<sup>2</sup> clip-on uses an advanced world's best ultra-low light optical detector and 1920 × 1080 OLED display – providing unmatched clarity black & white viewing at night.



## Rangefinders

---

### F<sub>1</sub><sup>TM</sup> Rangefinder

Extraordinary design meets extraordinary technology. The first over 1 km handheld or mounted laser rangefinder with multiple outputs. The F<sub>1</sub><sup>TM</sup> sports a clean, ultra-light, and timeless shape that feels natural while sitting the palm of your hand. The F<sub>1</sub><sup>TM</sup> is compatible with our ID technology and can drive the internal display of the G<sub>1</sub><sup>TM</sup>.



### F<sub>2</sub><sup>TM</sup> Rangefinder

Extraordinary design meets extraordinary technology. The first over 1 km handheld or mounted laser rangefinder with multiple outputs. The F<sub>2</sub><sup>TM</sup> sports a clean, ultra-light, and timeless shape that feels natural while sitting the palm of your hand. The F<sub>2</sub><sup>TM</sup> is compatible with our ID technology and can drive the internal display of the G<sub>1</sub><sup>TM</sup>.



## Binoculars

---

### B<sub>1</sub><sup>TM</sup> ED II Binoculars

Have the means to inspect that backyard bird and switch to a sharp and in focus distant animal or galaxy. The B<sub>1</sub><sup>TM</sup> binocular uses the finest ED (Extra-Low Dispersion) glass commercially available and produces stunning HD (High-Definition) images.



### B<sub>2</sub><sup>TM</sup> Binoculars

The B<sub>2</sub><sup>TM</sup> binocular is a top-of-the-line open bridge binocular with SuperHD performance. These 7 element eyepiece system provides the best eye relief means enjoyable viewing for eyeglass wearers, and the remarkable close focus capabilities. The B<sub>2</sub><sup>TM</sup> binocular uses the finest ED (Extra-Low Dispersion) glass commercially available and produces stunning HD (High-Definition) images.



### B<sub>5</sub><sup>TM</sup> LRF Binoculars

The B<sub>5</sub><sup>TM</sup> LRF binocular has “One touch” operation; OLED easy-to-read display; Three modes of ranging: M1 – Linear mode/M2 – Horizontal mode/M3 – Vertical mode; Super accurate ranging at distances up to 2 km; Bright optics with 10x magnification; and Large prisms with phase and dielectric coating.



## GoPro<sup>TM</sup> Solutions

---

### EagleEye<sup>TM</sup> GS 10-100

The EagleEye gun scope attachment allows any user to record and transmit high-resolution photos and video using their own gun scope. The attachment is designed around the user friendly and well-known GoPro<sup>TM</sup> suite of Hero<sup>TM</sup> cameras. Record and show off your hunting or shooting session!



## Other Products

### E<sub>1</sub><sup>TM</sup> IR Illuminator

E<sub>1</sub><sup>TM</sup> Infrared Illuminator is an advanced high-power unit designed for long-range illumination containing top level features such as a high-power, long-range VCSEL illuminator, a superb flat far-field optical system with Fresnel lens, and four modes operation on a single switch - Low/Medium/High/Off. Constructed from aircraft grade hard anodized finished aluminum, the E<sub>1</sub><sup>TM</sup> is both waterproof and shockproof.



### E<sub>2</sub><sup>TM</sup> IR Hunting Light

E<sub>2</sub><sup>TM</sup> Infrared Hunting Light is a new step in hunting illumination combining the best visible and night vision illumination, optics and electronics in one package. It has a high-power, long-range NV VCSEL illuminator and super bright Red and Green LEDs, and has a superb flat far-field optical system with a Fresnel lens. Constructed from aircraft grade hard anodized finished aluminum and Ultem, the E<sub>2</sub><sup>TM</sup> is both waterproof and shockproof.



### ZeroLens

The ZeroLens is an optical alignment adapter that enables the use of a PVS-14 night vision monocular (NVM) to add nighttime engagement capability to issued combat optical day sights without zero shift. A non-electronic, compact, and rugged device that enhances your current inventory of equipment and training requirements of adding new stand-alone night vision sights.



### 3X and 6x Lenses

The 3x Lens is an afocal magnification lens designed for use with the PVS-14 and Zero Lens to add nighttime engagement capability to ACOG and other daysights. Its compact size allows it to be used as part of a small arms sighting system without interference concerns.



## Laser Detectors

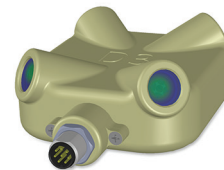
### D<sub>2</sub><sup>TM</sup> Laser Detector

D<sub>2</sub><sup>TM</sup> is a passive laser warning receiver that features a higher wavelength band of detection than its predecessor the D<sub>1</sub><sup>TM</sup>. It detects and coarsely locates laser emissions from other hunters' laser devices and rangefinders. The device enhances safety and survivability for today's battlefield environment by notifying an operator of any and all classes of commercial and military laser devices.



### D<sub>3</sub><sup>TM</sup> Laser Detector

The D<sub>3</sub><sup>TM</sup> laser warning system enhances safety and survivability in today's battlefield environment by notifying its wearer of any commercial or military targeting laser emissions. Four unique wide-band detectors (750 nm-1700 nm) detect laser signals in a 360 Az by 120 El degree field and selectable audio, visual, and/or tactile feedback notify the wearer of a detection.



### D<sub>5</sub><sup>TM</sup> Laser Detector

The D<sub>5</sub><sup>TM</sup> laser warning system enhances safety and survivability in today's battlefield environment by notifying its wearer of any commercial or military targeting laser emissions. Two unique (each with 2 sensors) wide-band detectors (750 nm to 1700 nm) detect laser signals in a 200 Az by 120 El degree field and selectable audio, visual, and/or tactile feedback notify the wearer of a detection.

